

**BROEN
UNIFLEX™
LIFT/TURN
VALVES FOR
BURNING
GASES**

BROEN UNIFLEX™ LIFT/TURN VALVES FOR BURNING GASES

BROEN UNIFLEX™ LIFT/TURN VALVES FOR BURNING GASES



BROEN

INTELLIGENT FLOW SOLUTIONS

BROEN UNIFLEX™

Lift/Turn Valves for Burning Gases

GENERAL INFORMATION

Materials

BROEN UniFlex™ Lift/Turn fittings are manufactured of the highest quality materials, primarily brass. The surfaces of all fittings are finished in the chemically resistant BROEN POLYCOAT.

Installation and technical tables

Special requirements of your local Gas board should be checked before commencing installation. All pipe work should be purged to ensure cleanliness before fitting.

Special advantages

The laboratory fittings from BROEN are designed and manufactured with the requirements of a modern laboratory in mind.

The hallmarks of these fittings are good performance, durability, easy operation,

flexibility and streamlined design, along with an easy-to-clean and attractive appearance.

Fittings from BROEN are ideal for all types of laboratories, and are delivered with easy-to-mount fixing items/mounting kit, that will keep the fitting fully locked in its position when installed. Consequently, the fitting will not turn unintentionally, which would result in leaks.

Pressure conversion			
	bar	Pa	psi
1 bar =	1	1x10 ⁵	14.5
1 Pa =	1x10 ⁻⁵	1	1.45x10 ⁻⁴
1 psi =	6.9x10 ⁻²	6.9x10 ³	1

Example: 67 psi = 67x(6.9x10⁻²) = 4.6 bar

HEADWORK

Valves for burning gases with Lift/Turn safety handles.

The valves are based on a BALLOFIX® ball valve.

Opening/closing function 90° Lift/Turn.

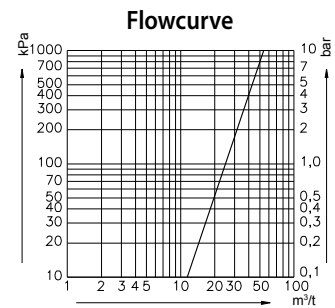


The valves for burning gases can be used for natural (G), liquefied petrol (LPG), town and low pressure bottle gases as well as vacuum, compressed air and nitrogen.

Maximum working pressures:		
kPa	bar	psi
700	7	100

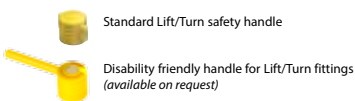
Pressure in relation to atmospheric pressure.

Allowable pressure test after installation: 1.5 x max. working pressure without function of the valve.



HANDLES

Options and media indication



BROEN UniFlex™ Lift/Turn fittings are delivered with handles having media indication according to EN13792.



TECHNICAL INFORMATION

Specification

Outlet Connections: Quick release coupling or fixed serrated nozzles suitable for 8 mm to 13 mm ID rubber tubing.

Inlet Connections: Please refer to section with inlet connections.

Construction: Brass body.

Seals: Nitrile.

Lubricant: Mineral oil based

Testing

All fittings are tested and inspected before dispatch.

Maximum design test pressure: 1000 kPa (10 bar).

Maximum design working pressure: 700 kPa (7 bar).

BROEN UNIFLEX™™ INTERNATIONAL APPROVALS

BROEN UniFlex™ Lift/Turn fittings and flexible connections for hoses and Cu-pipes are approved by

leading gas institutes in UK, Germany, Holland and Denmark. More approvals are pending.



Please refer to our web site www.broen.com for the latest product development news.

BROEN UNIFLEX™

Lift/Turn Valves for Burning Gases

No. 2520.317.1010-14

Burning Gas Lift/Turn

Bench mounted

Single Lift/Turn gas fitting.

Alternative media identification:

LPG: 2520.317.1012-14

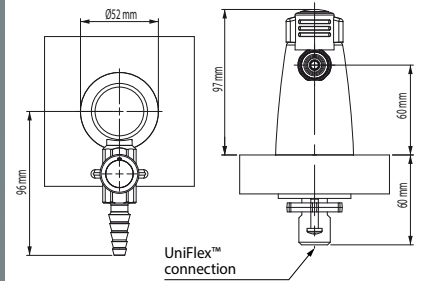
Also available for non-burning gases:

CA: 2520.317.1038-14

V: 2520.317.1041-14

N₂: 2520.317.1044-14

Weight: Approx. 0.7 kg



No. 2520.319.1010-14

Burning Gas Lift/Turn

Bench mounted

Two-way Lift/Turn gas fitting 180°.

Alternative media identification:

LPG: 2520.319.1012-14

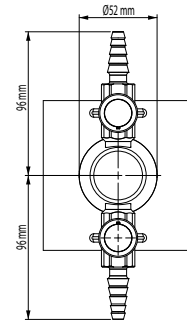
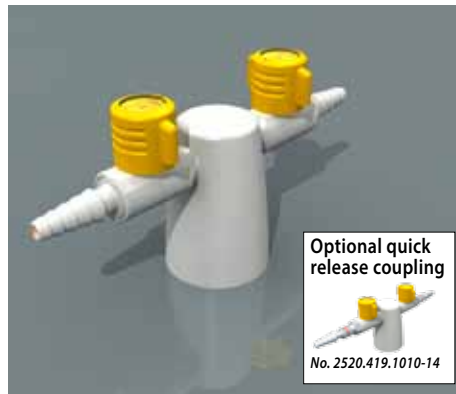
Also available for non-burning gases:

CA: 2520.319.1038-14

V: 2520.319.1041-14

N₂: 2520.319.1044-14

Weight: Approx. 0.8 kg



No. 2520.318.1010-14

Burning Gas Lift/Turn

Bench mounted

Two-way Lift/Turn gas fitting 90°.

Alternative media identification:

LPG: 2520.318.1012-14

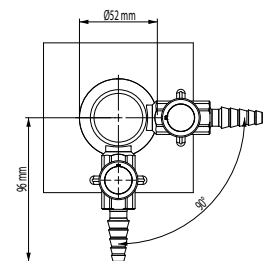
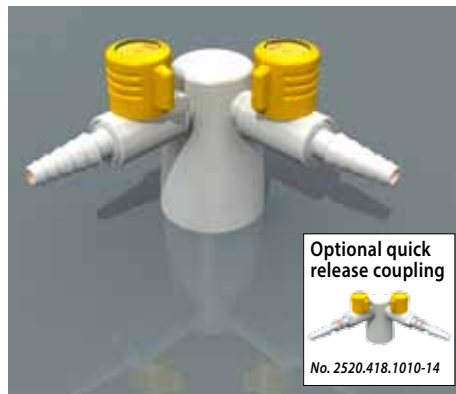
Also available for non-burning gases:

CA: 2520.318.1038-14

V: 2520.318.1041-14

N₂: 2520.318.1044-14

Weight: Approx. 0.8 kg



No. 2520.320.1010-14

Burning Gas Lift/Turn

Bench mounted

Four-way Lift/Turn gas fitting.

Alternative media identification:

LPG: 2520.320.1012-14

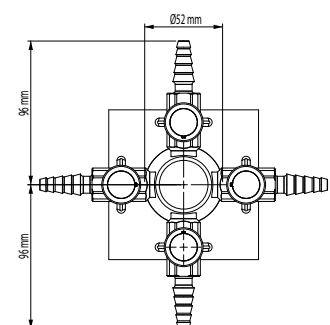
Also available for non-burning gases:

CA: 2520.320.1038-14

V: 2520.320.1041-14

N₂: 2520.320.1044-14

Weight: Approx. 1.1 kg



BROEN UNIFLEX™

Lift/Turn Valves for Burning Gases

No. 2520.397.1010

Burning Gas Lift/Turn

Wall/suspended mounted

Lift/Turn gas valve.

Alternative media identification:

LPG: 2520.397.1012

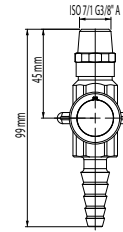
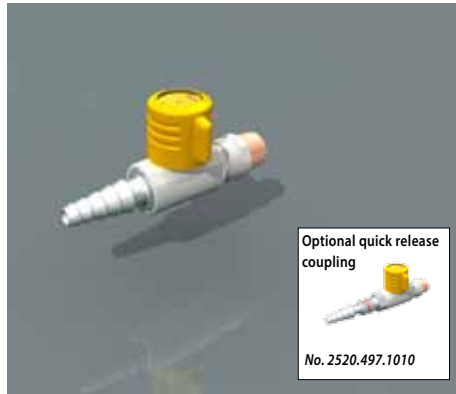
Also available for non-burning gases:

CA: 2520.397.1038

V: 2520.397.1041

N₂: 2520.397.1044

Weight: Approx. 0.1 kg



No. 2520.722.1010-14

Burning Gas Lift/Turn

Wall/suspended mounted

Lift/Turn gas fitting.

Alternative media identification:

LPG: 2520.722.1012-14

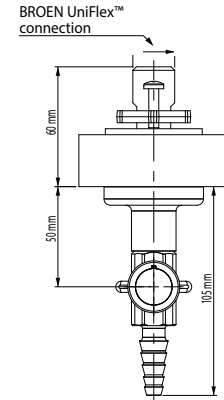
Also available for non-burning gases:

CA: 2520.722.1038-14

V: 2520.722.1041-14

N₂: 2520.722.1044-14

Weight: Approx. 0.7 kg



No. 2520.116.1010-14

Burning Gas Lift/Turn

Wall/suspended mounted

Two-way Lift/Turn gas fitting 90°.

Alternative media identification:

LPG: 2520.116.1012-14

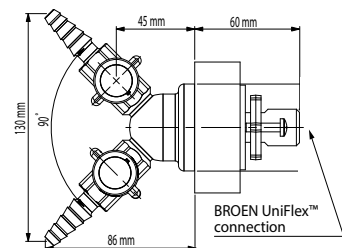
Also available for non-burning gases:

CA: 2520.116.1038-14

V: 2520.116.1041-14

N₂: 2520.116.1044-14

Weight: Approx. 1.2 kg



Additional products with Lift/Turn fittings



Two-way Lift/Turn gas fitting 90° for exposed mounting



Multimedia fittings



Multimedia fittings

For more information please contact your local BROEN LAB sales representative.

BROEN UNIFLEX™

Outlet and Inlet Connections

QUICK RELEASE COUPLING

In order to release the nozzle you have to pull back the sleeve of the coupling.

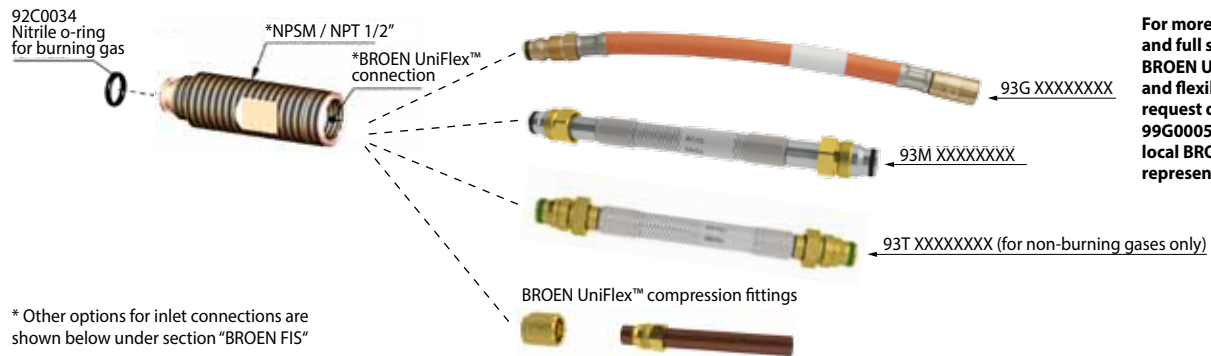
When the nozzle is removed, the coupling is closed regardless of the position of the valve handle.



BROEN UniFlex™ Lift/Turn fitting can be delivered with a non-return valve (check valve) on the outlet. Please contact your local BROEN LAB sales representative for more information.

INLET CONNECTIONS

Standard BROEN UniFlex™™ - Flexible connections for hoses and Cu-pipes



For more information and full specification of BROEN UniFlex™ hoses and flexible pipes please request document 99G0005 or contact your local BROEN LAB sales representative.

* Other options for inlet connections are shown below under section "BROEN FIS"

BROEN UniFlex™ Compression Fittings



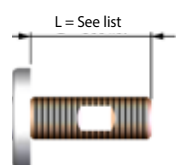
Connection: 3/8" pipe	Connection: Ø8mm pipe	Connection: Ø10mm pipe	Connection: Ø12mm pipe	Connection: Ø15mm pipe
Order no.: 15 215 120	Order no.: 15 215 170	Order no.: 15 215 220	Order no.: 15 215 300	Order no.: 15 212 350

Support bush

- recommended for soft & medium hard copper

3/8"	ø8x1mm	ø10x0.8mm	ø10x1mm	ø12mm	ø15mm
152 1139	044.093 008	044.093 010	044.093 110	044.093 012	044.093 015

BROEN FIS (Flexible Inlet System)



Length / L	Standard length						
	L = 30mm	L = 45mm	L = 60mm	L = 80mm	L = 90mm	L = 120mm	L = 150mm
1) Standard connection (External: NPT 1/2" Internal: BROEN UniFlex™)	Code 05	Code 32	Code 14	Code 33	Code 18	Code 34	Code 35
2) Optional connection (External: G1/2" Internal: Ø14,7mm x 6,5mm)	Code 02	Code 06	Code 08	Code 15	Code 17	Code 19	Code 20
3) Optional connection (External: NPT 3/8" Internal: Ø8mm hole)	Code 03	Code 07	Code 10	Code 28	Code 29	Code 30	Code 31

Please refer to our web site www.broen.com for the latest product development news.

BROEN LAB develops, manufactures and delivers complete range of fittings for professional laboratories. Our know-how and our quality products ensure the precise flow of water, gases and air, from source to user.

BROEN LAB solutions are used by professional users in many kinds of laboratories, from the education and health sectors to industry in general. Our products are already an integrated part of many workplaces. From fittings for purified water, nitrogen, vacuum and compressed air, to the control and regulation of pure gases in critical applications such as a gas chromatography and spectrometry.

Our extensive knowledge allows us to continually develop and optimize our products so that they meet customer needs and specifications. Safety, functionality and quality are an integral part of product design and flexibility. Our insight and understanding of working environments and safety in laboratories allow us to develop custom solutions for projects around the world. Use us to plan your project so we can advise you on laboratory layout and design.

HEAD OFFICE

BROEN LAB GROUP

Skovvej 30 • DK-5610 Assens
Tel. +45 6471 2095 • Fax +45 6471 2476
E-mail: lab@broen.com



BROEN LAB GROUP ISO 9001 certification

In September 1991 BROEN LAB GROUP was certified according to ISO 9001 as one of the first Danish companies. The certification was carried out by Bureau Veritas, Denmark, for our Danish site at Assens.

The quality management system of BROEN LAB GROUP now complies with detailed specifications laid down by the internationally acknowledged EN ISO 9001:2008. This certification will further contribute to BROEN LAB GROUP's reputation for quality and reliability.

INTERNATIONAL OFFICES

BROEN Armaturen GmbH

Industriestrasse 8 • D - 64579 Gernsheim • Germany
Tel. +49 6258 9319-0 • Fax +49 6258 51812
E-mail: info@broen.de

BROEN VALVES Ltd.

7, Cleton Street Business Park, Cleton Street
Tipton • West Midlands DY4 7TR • U.K.
Tel. +44 121 522 4515 • Fax +44 121 522 4535
E-mail: broenvalves@broen.com

BROEN Singapore Pte. Ltd.

10 Bukit Batok Crescent #10-02 • The Spire S(658079) • Singapore
Tel: +65 6298 0662 • Fax: +65 6298 0468
E-mail: sales@broen.com.sg

www.broen.com

BUILDING
INSTALLATIONS

BUILDING
CONTROLS

DISTRICT
ENERGY

OIL & GAS

LAB &
EMERGENCY
SHOWERS

